

Roslindale Gateway Path 10% Concept Design



Jennifer Relstab, P.E., Horsley Witten Group
May 8, 2017



Presentation Outline

- Project Partners + Funders
- Project Goals
- Site Assessments
- 10% Concept Design
- Design Options
- Next Steps

Project Partners



LivableStreets

Rethinking urban transportation



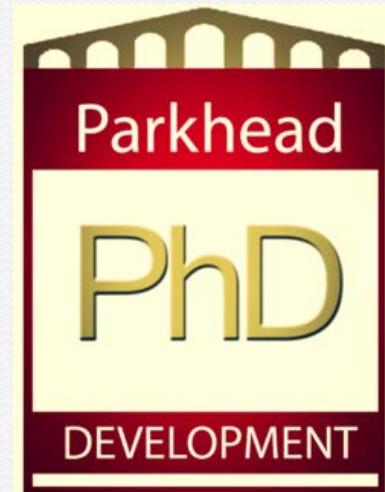
The ARNOLD
ARBORETUM
of HARVARD UNIVERSITY



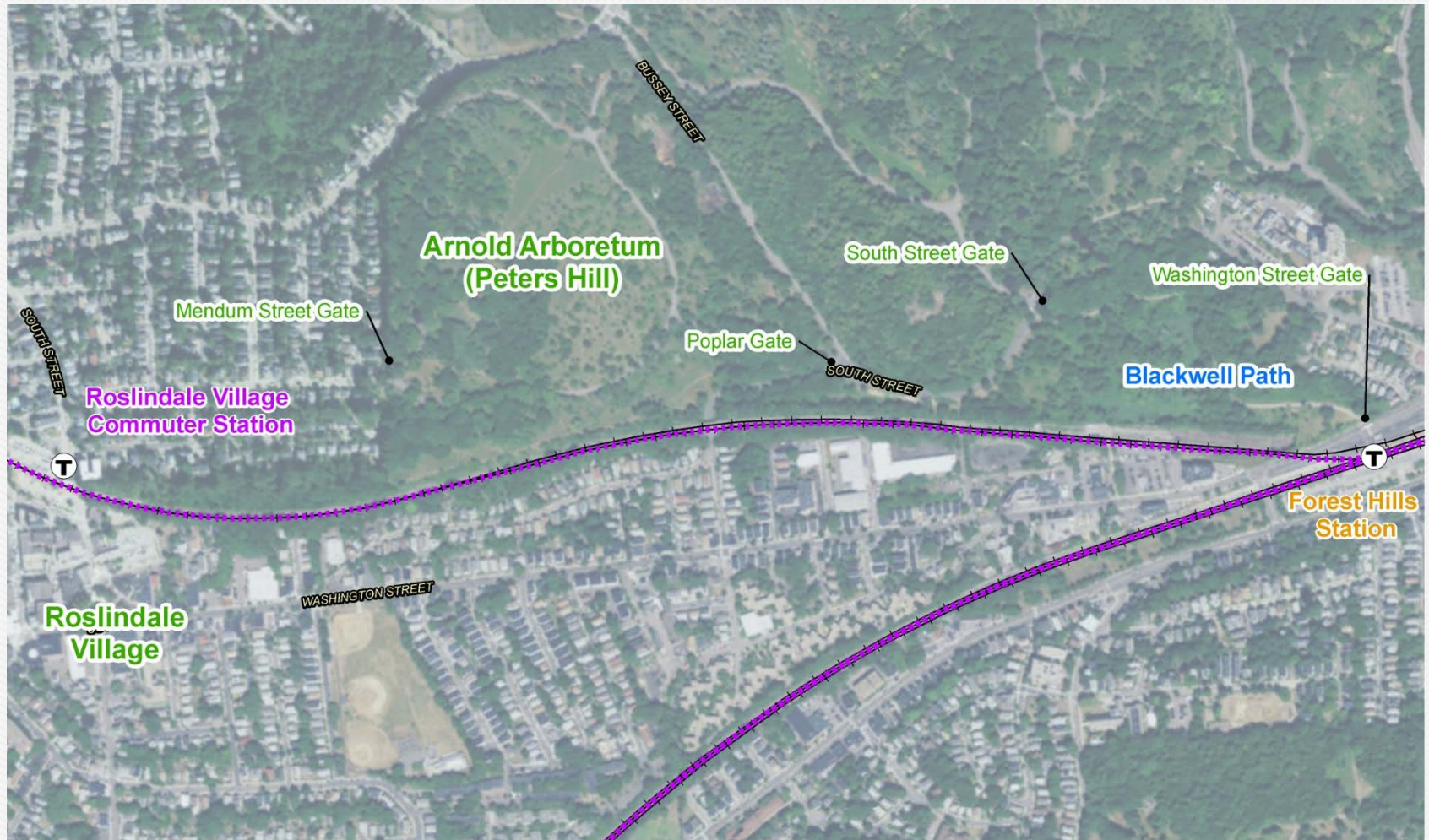
Project Funders



**ROSLINDALE VILLAGE
MAIN STREET**



Project Orientation





Project Goals

- A safer connection for cyclists and pedestrians from Roslindale Village to the Arboretum
- A link for underserved portions of Roslindale to the Arboretum and the Village
- A connection to the Blackwell Path Extension (and the Southwest Corridor)
- An opportunity to connect to the Arboretum

Path Safety

- Several studies completed evaluated crime on major paths in US
- No increases on crime due to paths
- Crime present along paths is often correlated with the amount of crime in neighboring area

Figure 1, Comparison of Major Crime Rates between Rail Trails and the Nation
(rates per 100,000 population), Source: Rails To Trails Conservancy.

CRIME	URBAN		SUBURBAN		RURAL	
	1995 National ¹	Rails- Trails ²	1995 National ¹	Rails- Trails ²	1995 National ¹	Rails- Trails ²
Mugging	335	0.53	102	0.00	19	0.0
Assault	531	0.58	293	0.02	203	0.01
Forcible Rape	43	.04	29	0.00	26	0.01
Murder	11	.04	4	0.01	5	9.01

1. Rates per 100,000 Population. FBI Uniform Crime Reports for 1995

2. Rates per 100,000 users, RTC survey results 1995



Project Timeline

- 2015: Idea of Roslindale Gateway Path starts to take shape
- Early 2016: WalkUP partners with the LivableStreets Alliance, the Emerald Network and Tufts Urban and Environmental Policy and Planning program
- June 2016: HW teams with WalkUP Roslindale and LivableStreets

Study Area



Site Walks



Survey of MBTA parcel

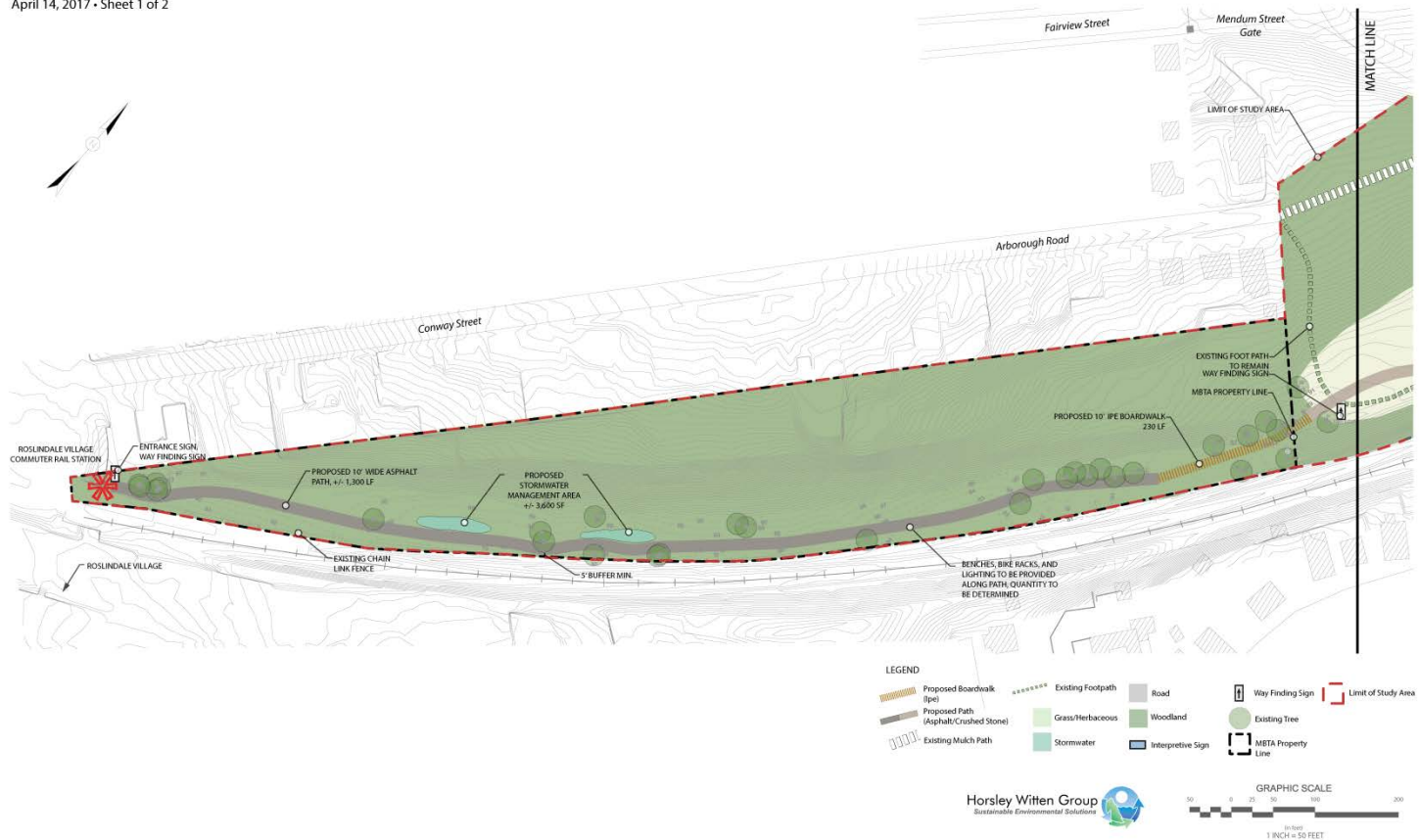


Summary of Concept

- Provide 10 foot wide accessible shared pathway
- Connect Roslindale Village Commuter Rail Station to the South St/ Archdale St underpass (Blackwell Path Extension)
- Add gateways and signage for way finding and education
- Encourage a slightly sinuous path, but generally follow existing desire lines (footpaths)

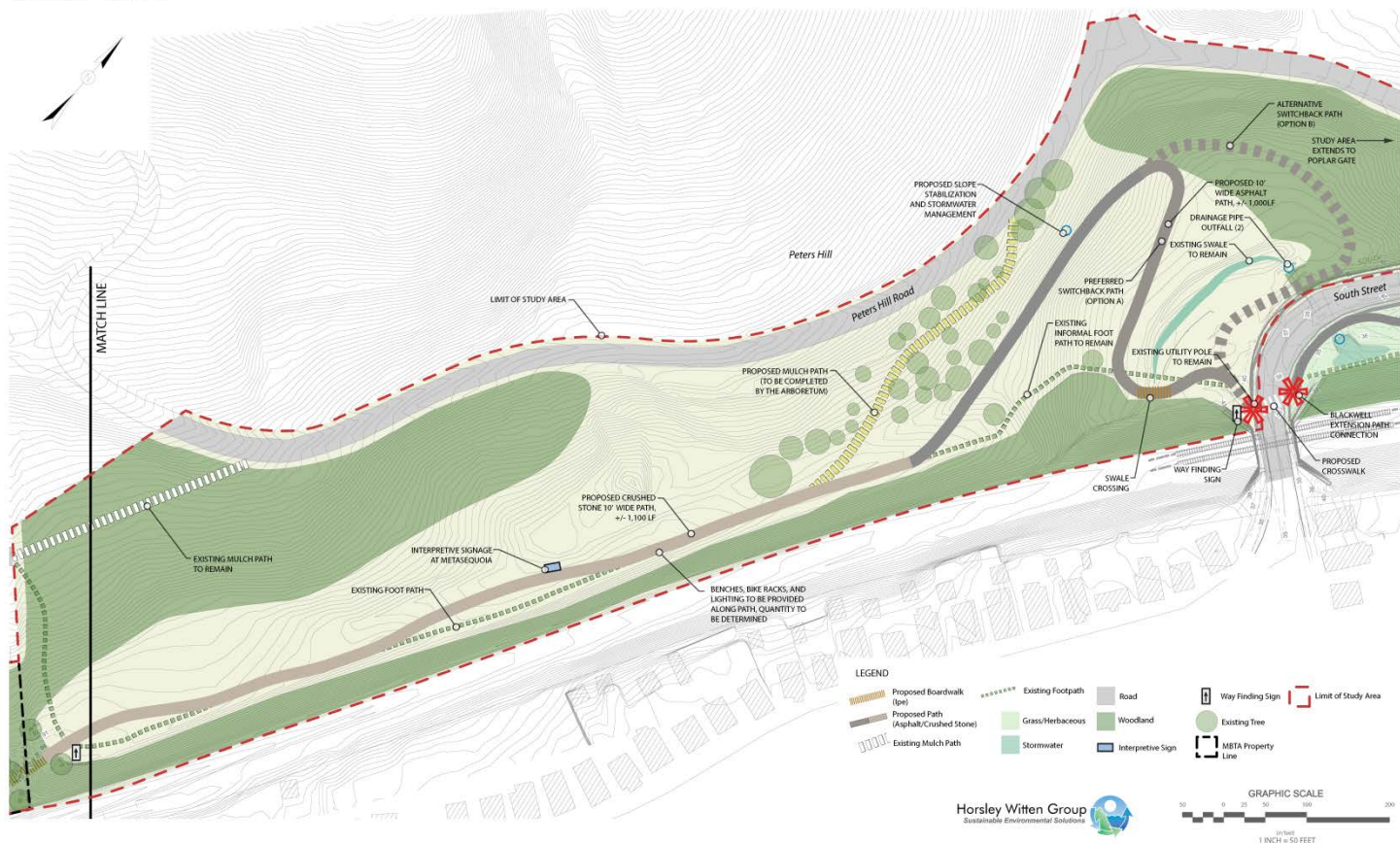
Section 1 – MBTA Parcel

Roslindale Gateway Path Conceptual Plan
Section 1 (MBTA Property) • Roslindale, MA
April 14, 2017 • Sheet 1 of 2



Section 2 – Arboretum Parcel

Roslindale Gateway Path Conceptual Plan
Section 2 (Arnold Arboretum Property) • Roslindale, MA
April 14, 2017 • Sheet 2 of 2



Path Rendering



Gateway Options



Rendering developed by Halvorson Design Partnership



Signage Options



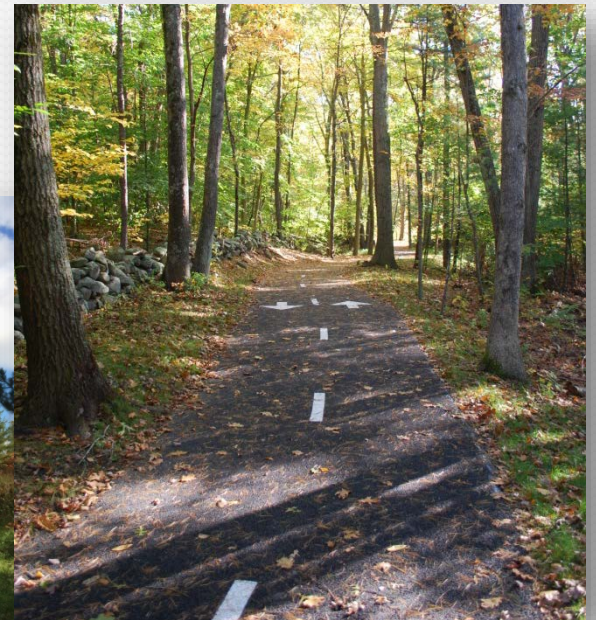
Material Options



Bituminous
Concrete (Asphalt)



Crushed Stone Dust



Porous Asphalt

- Other Options: Dense Graded Stone, Stabilized Soil

Lighting Options



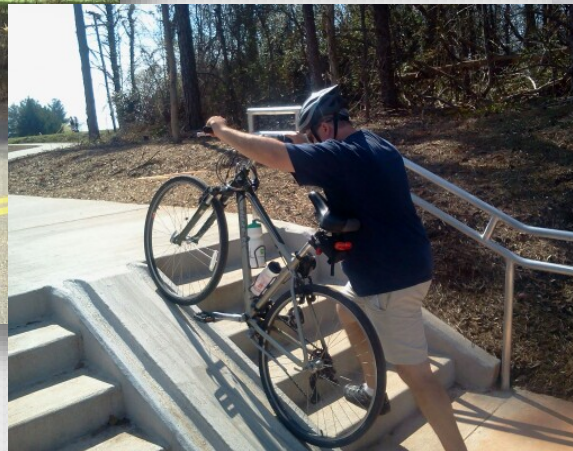
Solar LED Bollards



Photoluminescent
Stones

- Other Options: Bollards (with conduit), In Grade Solar

South St. Connection Options



- Other Options: Grade to street elevation (i.e., no stairs)

Next Steps

- Funding for Design Development
- Discussions with stakeholders on key issues
 - MBTA parcel
 - Drainage swale crossing (BWSC, MWRA)
 - South Street crossing (BTD)
 - Long-term maintenance (Parks)
- Gathering support!



Follow updates at WalkUP Roslindale's website:
<http://walkuproslindale.org/gateway>

Jennifer Relstab, P.E.
Water Resources Engineer, Horsley Witten Group